

Madison, Wisconsin

CITY OF MADISON

CITY ENGINEERING DIVISION

DEPARTMENT OF PUBLIC WORKS

PLAN OF PROPOSED IMPROVEMENT

WEXFORD POND DREDGING

PUBLIC IMPROVEMENT PROJECT
APPROVED

APPROVED DATE
6/20/2023

BY THE COMMON COUNCIL
OF MADISON, WISCONSIN

PUBLIC IMPROVEMENT DESIGN
APPROVED BY:

Jun 22, 2023

City Engineer

Date

POND & STORM
DESIGNED BY:

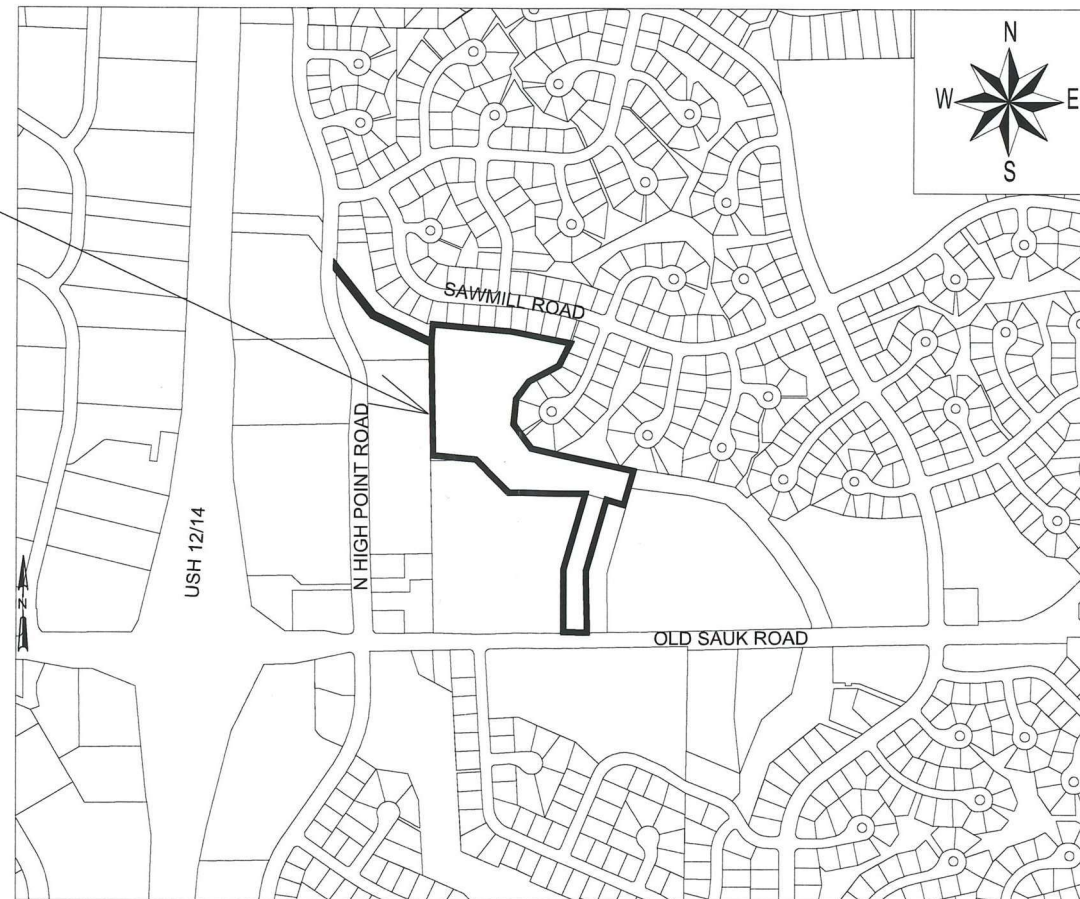


INDEX OF SHEETS

SHEET NO. 1	TITLE SHEET
SHEET NO. 2	GENERAL NOTES AND LEGEND
SHEET NO. 3-4	CONSTRUCTION DETAILS
SHEET NO. 5	EXISTING CONDITIONS
SHEET NO. 6-8	EROSION CONTROL AND GRADING PLAN
SHEET NO. 9	OUTFALL PIPE PROFILES
SHEET NO. 10-12	RESTORATION PLAN
SHEET NO. 13	CONSTRUCTION ACCESS PLAN
SHEET NO. 14-15	VEGETATED ACCESS PLAN AND PROFILE
SHEET NO. 16-17	POND CROSS SECTIONS
SHEET NO. 18-21	VEGETATED ACCESS CROSS SECTIONS

CITY PROJECT NO. 12750
CONTRACT NO. 8876

PROJECT LOCATION



Revision #1
Revised 10/24/23 - Updated Sheet 13
Revision #2
Revised 12/21/23 - Updated Sheet 3

PLOT SCALE: 6" = 1'-0" XREF

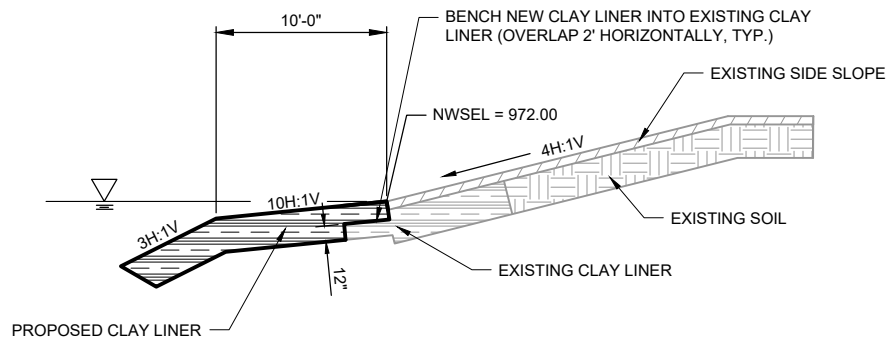
PLOT NAME: 11X17

REV. DATE: 6/1/2023 8:54 AM

ORIGINATOR: CITY OF MADISON

LEGEND	
EXISTING	PROPOSED
EXISTING RIGHT OF WAY	PROPOSED GAS LINE
EXISTING PROPERTY LINE	PROPOSED SANITARY SEWER
EXISTING GAS LINE	PROPOSED WATER MAIN
EXISTING SANITARY SEWER	PROPOSED WATER MAIN W/ CASING
EXISTING WATER MAIN	PROPOSED STORM SEWER
EXISTING STORM SEWER	PROPOSED TELEPHONE LINE
EXISTING TELEPHONE LINE	PROPOSED UNDERGROUND ELECTRIC LINE
EXISTING UNDERGROUND ELECTRIC LINE	PROPOSED FIBER OPTIC LINE
EXISTING OVERHEAD ELECTRIC LINE	PROPOSED FENCE
EXISTING FIBER OPTIC LINE	PROPOSED SILT FENCE
EXISTING FENCE	PROPOSED SHEET PILING
CONTROL POINT	PROPOSED INLET PROTECTION
EXISTING BENCHMARK	PROPOSED END CAP
SOIL BORING	PROPOSED WATER VALVE
EXISTING DECIDUOUS/CONIFEROUS TREE	PROPOSED FIRE HYDRANT
EXISTING TREE STUMP	PROPOSED SANITARY SEWER MANHOLE
EXISTING MANHOLE	PROPOSED STORM SEWER MANHOLE
EXISTING INLET	PROPOSED INLET
EXISTING CATCH BASIN	FUTURE PROJECT BY OTHERS
EXISTING POWER POLE	MAJOR CONTOUR
EXISTING LIGHT POLE	MINOR CONTOUR
EXISTING GAS VALVE	CULVERT
EXISTING SIGN	
EXISTING WATER VALVE	
EXISTING WATER MANHOLE	
EXISTING FIRE HYDRANT	
WETLAND DELINEATION	
WETLAND BUFFER	
APRON END WALL	
IRON PIPE	
PROPERTY LINE	
TREE LINE	

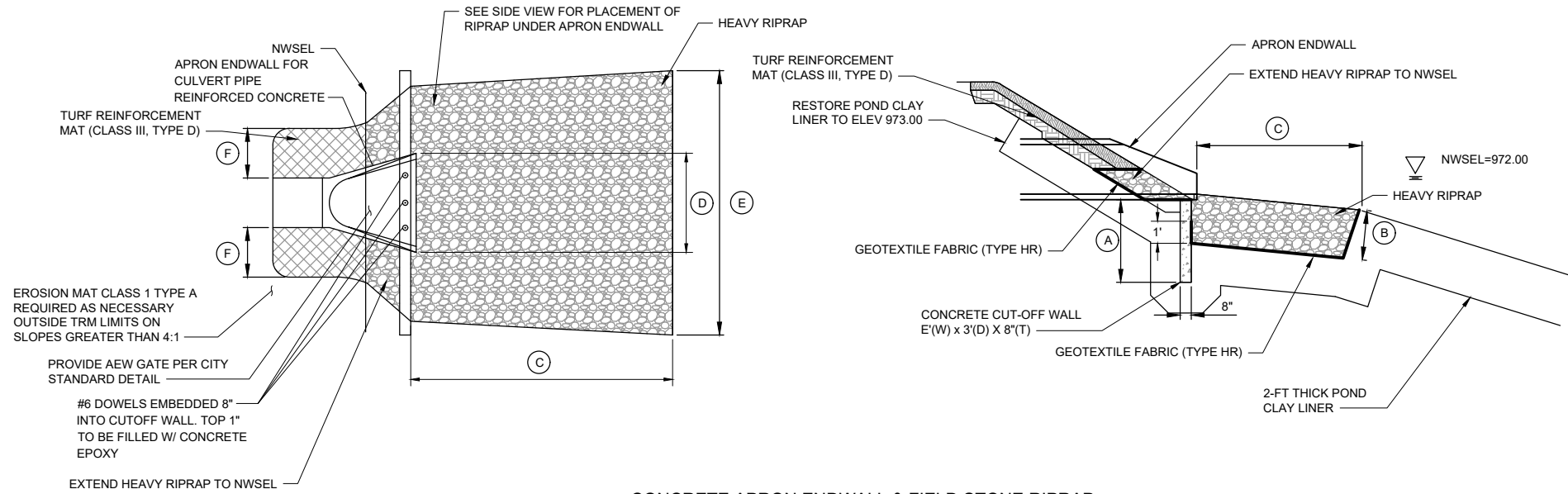
GENERAL NOTES & LEGEND	12750	CITY OF MADISON	8876	CONTRACT NO.:										
S:\MAD\1000--1099\1020\126\Drawings\CAD\Civil 3d\Sheets\Other\General Notes & Legend.dwg														
<table border="1" style="width: 100%; border-collapse: collapse;"> <tr> <th style="width: 10%;">MARK</th> <th style="width: 10%;">REVISION</th> <th style="width: 10%;">DATE</th> <th style="width: 10%;">BY</th> </tr> <tr> <td style="text-align: center;">###</td> <td style="text-align: center;">###</td> <td style="text-align: center;">###</td> <td style="text-align: center;">###</td> </tr> </table>					MARK	REVISION	DATE	BY	###	###	###	###		
MARK	REVISION	DATE	BY											
###	###	###	###											
<table border="1" style="width: 100%; border-collapse: collapse;"> <tr> <td style="width: 20%; text-align: center;">12750</td> <td style="width: 20%; text-align: center;">12750</td> <td style="width: 20%; text-align: center;">6/2/2023 11:09 AM</td> <td style="width: 20%; text-align: center;">TAW</td> <td style="width: 20%; text-align: center;">NONE</td> </tr> <tr> <td colspan="5" style="text-align: right;">Scale: NONE</td> </tr> </table>					12750	12750	6/2/2023 11:09 AM	TAW	NONE	Scale: NONE				
12750	12750	6/2/2023 11:09 AM	TAW	NONE										
Scale: NONE														
12750														
2														



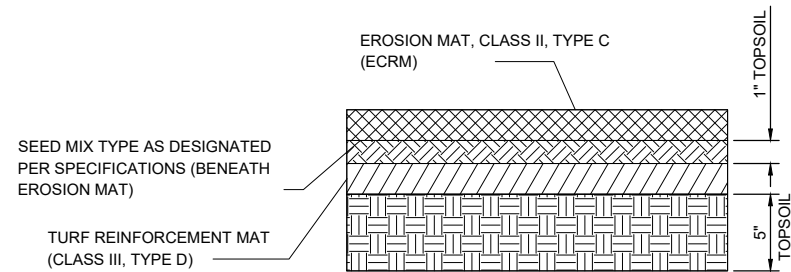
CLAY LINER CONNECTION DETAIL
NO SCALE

PIPE DIAMETER	(A)	(B)	(C)	(D)	(E)	(F)
48"	3'-0"	2'-0"	9'-0"	7'-0"	10'	6'-0"
72"	3'-0"	2'-0"	11'-0"	9'-0"	15'-6"	6'-0"

• PROVIDE CONCRETE PIPE JOINT TIES PER CITY OF MADISON STANDARD DETAIL DRAWING 5.4.6.

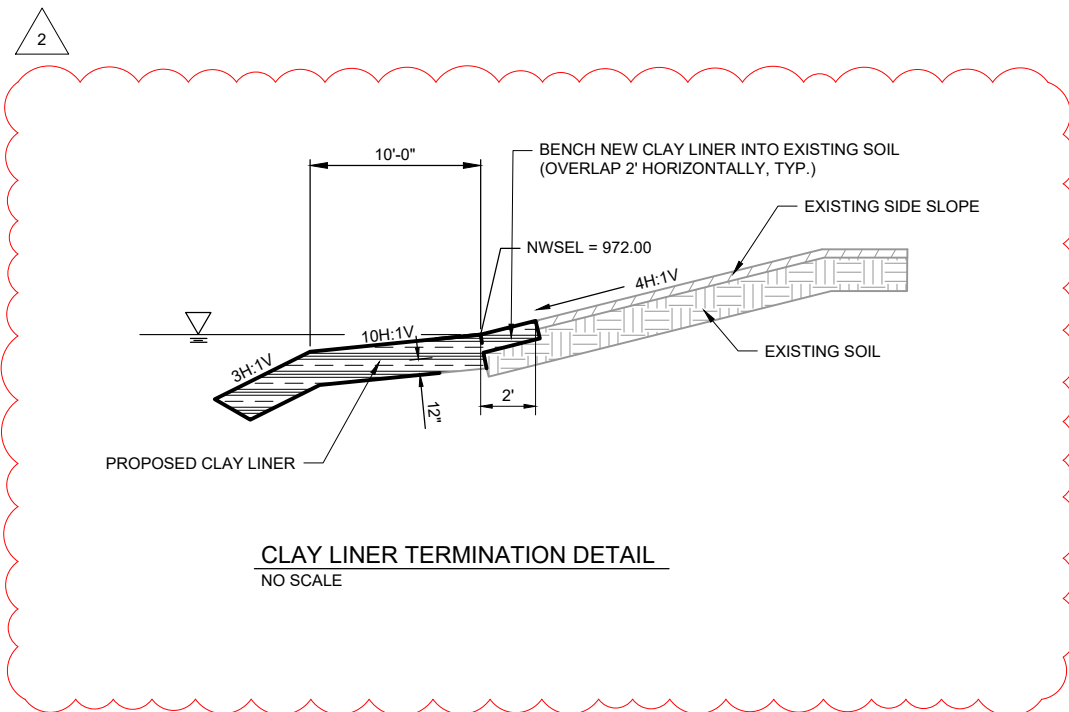


CONCRETE APRON ENDWALL & FIELD STONE RIPRAP
NO SCALE



NOTE:
1. TOPSOIL CAN BE EXISTING TOPSOIL OR PARTIALLY NEW/PARTIALLY EXISTING.
2. SEE DRAWINGS AND CROSS SECTIONS FOR LOCATIONS AND USE.

TURF REINFORCEMENT MAT (TRM) SYSTEM
NO SCALE



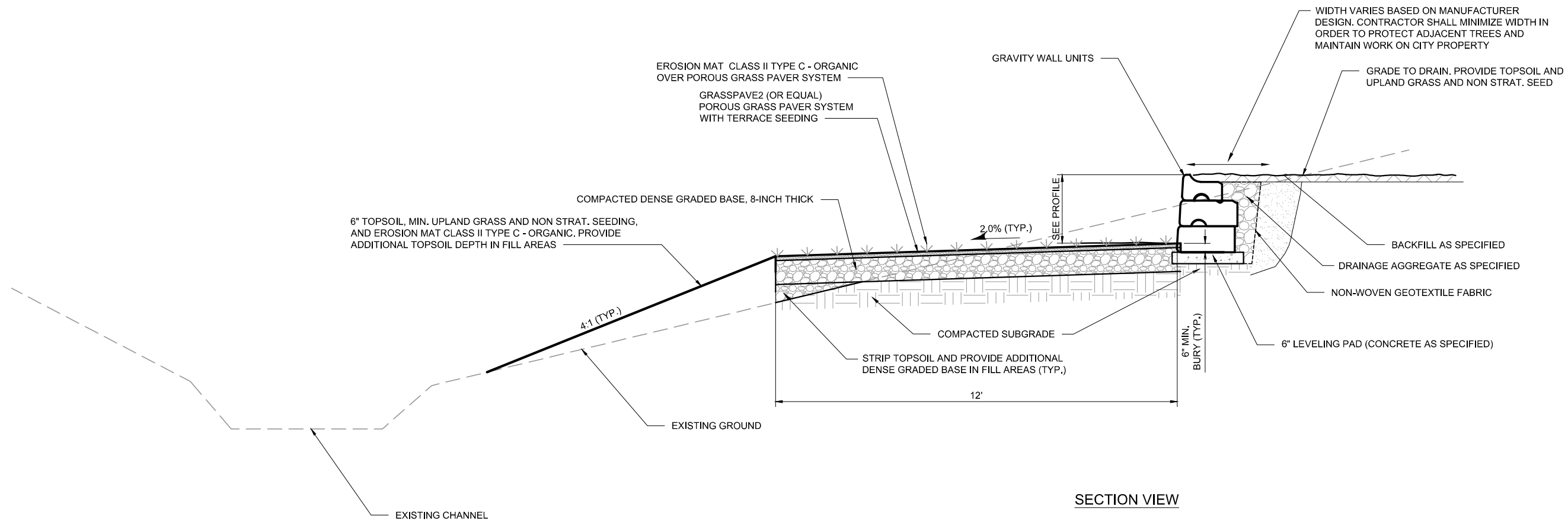
CLAY LINER TERMINATION DETAIL
NO SCALE

NO.	REVISION	DATE	BY
1	###	###	###
2	CLAY LINER TERMINATION DETAIL	12/20/23	TAV

12750
CITY OF MADISON
CONTRACT NO.: 8876

CONSTRUCTION DETAILS
WEXFORD POND DREDGING
S:\MAD1000-1099\1020\126\Drawings\CAD\Civil 3d\Sheets\Plan\Pond Plan Sheets.dwg





VEGETATED ACCESS/RETAINING WALL DETAIL

SECTION VIEW

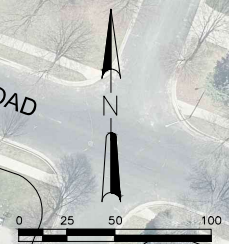
###	###	###	###
###	###	###	###
###	###	###	###
###	###	###	###
MARK	REVISION	DATE	BY
12750	12750	6/2/2023 11:09 AM	TAW
Designed By: TAW			Scale: NONE
Date: 6/2/2023 11:09 AM			4

12750
 CITY OF MADISON
 8876
 CONTRACT NO:

CONSTRUCTION DETAILS
 WEXFORD POND DREDGING
 S:\MAD\1000--1099\1020\126\Drawings\CAD\Civil 3d\Sheets\Plan\Pond Plan Sheets.dwg



NOTE: ALL EXISTING ELEMENTS TO REMAIN SHALL BE PROTECTED BY CONTRACTOR.



EXISTING 30" ENDWALL STORM EVENT FLOWS:
 2 YEAR STORM: 40 CFS
 10 YEAR STORM: 45 CFS
 100 YEAR STORM: 45 CFS

EXISTING TWIN 48" ENDWALL STORM EVENT FLOWS:
 2 YEAR STORM: 141 CFS
 10 YEAR STORM: 209 CFS
 100 YEAR STORM: 281 CFS

EXISTING 84" ENDWALL STORM EVENT FLOWS:
 2 YEAR STORM: 291 CFS
 10 YEAR STORM: 361 CFS
 100 YEAR STORM: 390 CFS

MARK	REVISION	DATE	BY
###	###	###	###
###	###	###	###
###	###	###	###
###	###	###	###

12750
 CITY OF MADISON
 CONTRACT NO: 8876

EXISTING CONDITIONS
 WEXFORD POND DREDGING
 S:\MAD1000-1099\1020\126\Drawings\CAD\Civil 3d\Sheets\Plan\Pond Sheets 7.22.22.dwg

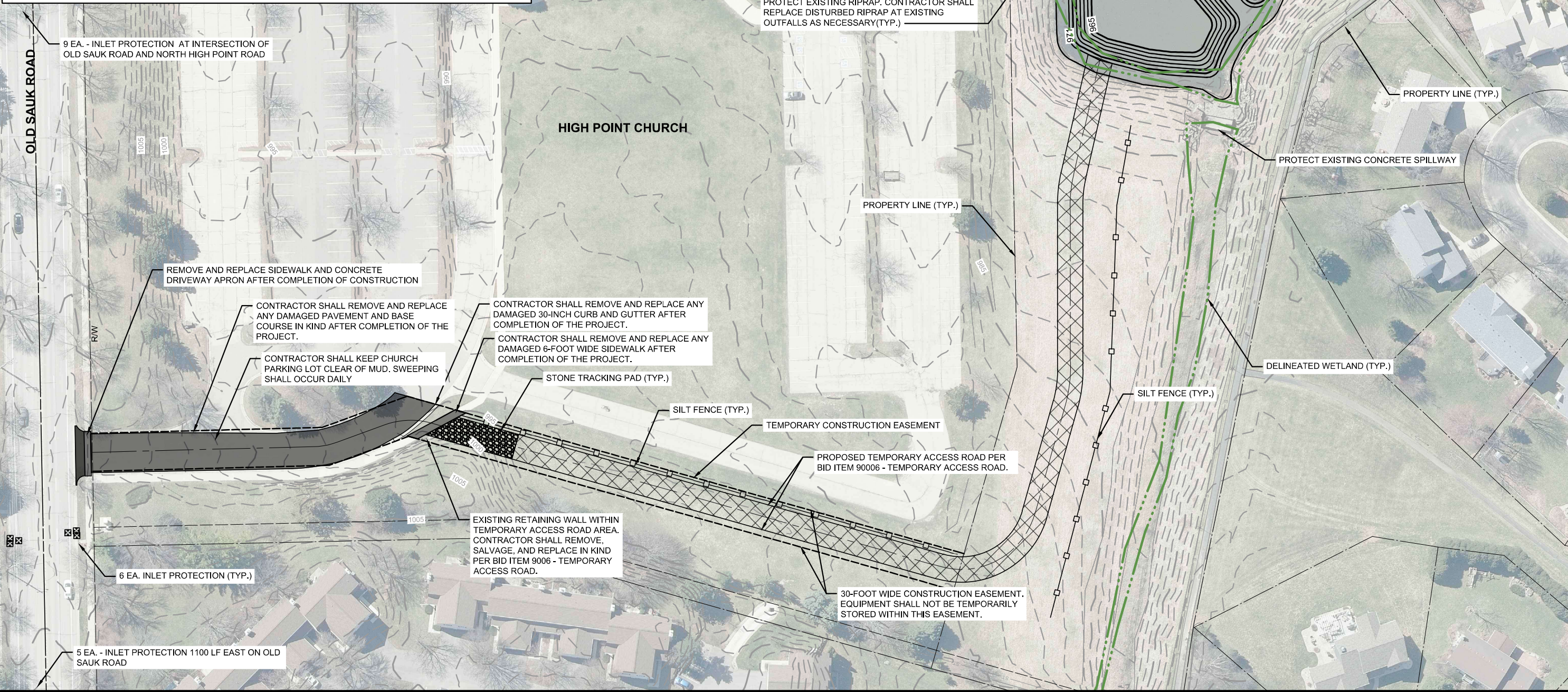


12750
 5

Scale: 1"=100'
 Date: 6/2/2023 11:09 AM
 Designed By: JAW
 12750

EROSION CONTROL NOTES:

1. EROSION CONTROL MEASURES SHALL BE IN PLACE PRIOR TO ANY OTHER CONSTRUCTION ACTIVITIES.
2. THE CONTRACTOR IS RESPONSIBLE FOR THE CONSTRUCTION AND MAINTENANCE OF ALL EROSION CONTROL MEASURES UNTIL FINAL ACCEPTANCE BY THE CITY OF MADISON.
3. THE CONTRACTOR SHALL INSTALL AND MAINTAIN EROSION CONTROL MEASURES IN ACCORDANCE WITH THE WDNR SOC STANDARDS AND CITY OF MADISON STANDARD SPECIFICATIONS.
4. THE CONTRACTOR SHALL PROVIDE STREET SWEEPING AS NEEDED ON A DAILY BASIS TO KEEP TRACKING TO A MINIMUM.
5. THE CONTRACTOR SHALL BE RESPONSIBLE FOR ALL STORM WATER CONTROL MEASURES NECESSARY TO MAINTAIN EXISTING CONVEYANCE CAPACITY THROUGHOUT THE SITE.
6. NO CONSTRUCTION MATERIALS OR STOCKPILES SHALL BE STORED IN THE CHANNELS OR POND. ALL TEMPORARY STOCKPILES SHALL BE SURROUNDED BY SILT SOCK AT NO ADDITIONAL COST.
7. DITCH CHECKS SHALL BE CONSTRUCTED IN THE CHANNEL AS SHOWN IN THE PLAN SET, OR AS DIRECTED BY THE CONSTRUCTION ENGINEER.
8. THE CONTRACTOR SHALL INSTALL SILT FENCE AS SHOWN IN THE PLAN SET, OR AT THE DIRECTION OF THE CONSTRUCTION ENGINEER.
9. ALL EROSION CONTROL MATTING SHALL BE OVERLAPPED SUCH THAT THE OVERLAP CORRESPONDS TO THE FLOW DIRECTION.
10. ADDITIONAL INLET PROTECTION MAY BE REQUIRED OUTSIDE THE LIMITS OF THIS SHEET.
11. THE CONTRACTOR SHALL BE AWARE THAT SILT FENCE, DITCH CHECKS, AND OTHER EROSION CONTROL MEASURES MAY BE PHASED, ACCORDING TO CONSTRUCTION SCHEDULE. SOME ITEMS MAY NEED TO BE INSTALLED OR REMOVED AS WORK PROGRESSES.
12. ALL SEED RESTORATION ON SLOPES >4:1 SHALL BE PROVIDED WITH EROSION MAT, CLASS 1, TYPE A - ORGANIC, UNLESS INDICATED OTHERWISE IN PLANS OR SPECIFICATIONS.
13. REPAIR TO EXISTING PAVEMENT, SIDEWALK, AND CURB AND GUTTER WITHIN THE EXISTING EASEMENT SHALL BE PAID UNDER THEIR RESPECTIVE BID ITEMS. RESTORATION OF THE AREA WITHIN THE TEMPORARY ACCESS ROAD SHALL BE PAID UNDER BID ITEM 90006 - TEMPORARY ACCESS ROAD. ALL OTHER REPAIRS TO DAMAGED AREAS SHALL BE CONSIDERED INCIDENTAL TO THIS CONTRACT.



MARK	REVISION	DATE	BY
###	###	###	###
###	###	###	###
###	###	###	###
###	###	###	###

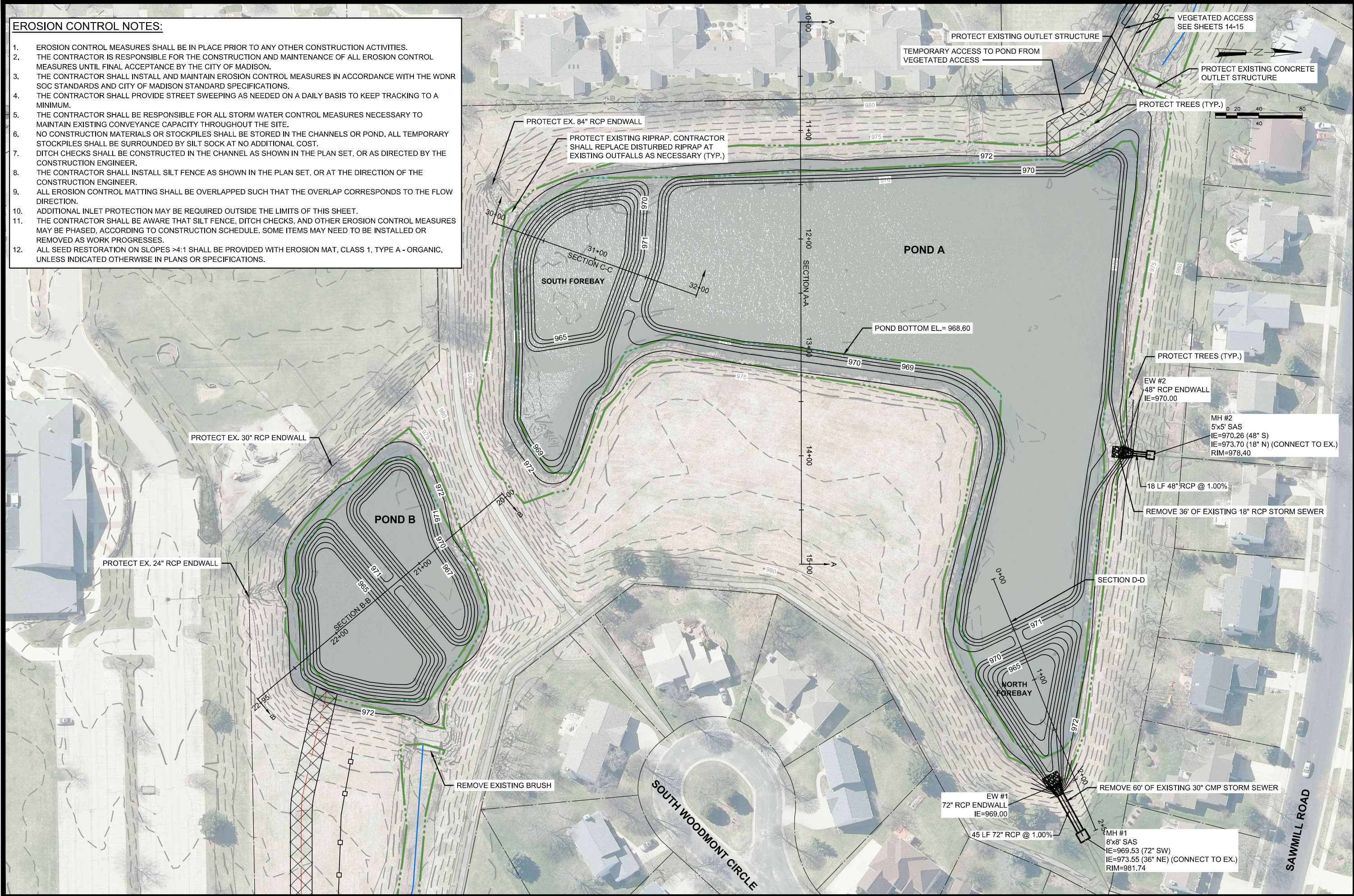
12750
 CITY OF MADISON
 CONTRACT NO: 8876

EROSION CONTROL AND GRADING PLAN-HIGH POINT CHURCH
 WEXFORD POND DREDGING
 S:\MAD\1000--1099\1020\126\Drawings\CAD\Civil\3d\SheetsPlan\Grading Plan.dwg



EROSION CONTROL NOTES:

1. EROSION CONTROL MEASURES SHALL BE IN PLACE PRIOR TO ANY OTHER CONSTRUCTION ACTIVITIES.
2. THE CONTRACTOR IS RESPONSIBLE FOR THE CONSTRUCTION AND MAINTENANCE OF ALL EROSION CONTROL MEASURES UNTIL FINAL ACCEPTANCE BY THE CITY OF MADISON.
3. THE CONTRACTOR SHALL INSTALL AND MAINTAIN EROSION CONTROL MEASURES IN ACCORDANCE WITH THE WDNR SOC STANDARDS AND CITY OF MADISON STANDARD SPECIFICATIONS.
4. THE CONTRACTOR SHALL PROVIDE STREET SWEEPING AS NEEDED ON A DAILY BASIS TO KEEP TRACKING TO A MINIMUM.
5. THE CONTRACTOR SHALL BE RESPONSIBLE FOR ALL STORM WATER CONTROL MEASURES NECESSARY TO MAINTAIN EXISTING CONVEYANCE CAPACITY THROUGHOUT THE SITE.
6. NO CONSTRUCTION MATERIALS OR STOCKPILES SHALL BE STORED IN THE CHANNELS OR POND. ALL TEMPORARY STOCKPILES SHALL BE SURROUNDED BY SILT SOCK AT NO ADDITIONAL COST.
7. DITCH CHECKS SHALL BE CONSTRUCTED IN THE CHANNEL AS SHOWN IN THE PLAN SET, OR AS DIRECTED BY THE CONSTRUCTION ENGINEER.
8. THE CONTRACTOR SHALL INSTALL SILT FENCE AS SHOWN IN THE PLAN SET, OR AT THE DIRECTION OF THE CONSTRUCTION ENGINEER.
9. ALL EROSION CONTROL MATTING SHALL BE OVERLAPPED SUCH THAT THE OVERLAP CORRESPONDS TO THE FLOW DIRECTION.
10. ADDITIONAL INLET PROTECTION MAY BE REQUIRED OUTSIDE THE LIMITS OF THIS SHEET.
11. THE CONTRACTOR SHALL BE AWARE THAT SILT FENCE, DITCH CHECKS, AND OTHER EROSION CONTROL MEASURES MAY BE PHASED, ACCORDING TO CONSTRUCTION SCHEDULE. SOME ITEMS MAY NEED TO BE INSTALLED OR REMOVED AS WORK PROGRESSES.
12. ALL SEED RESTORATION ON SLOPES >4:1 SHALL BE PROVIDED WITH EROSION MAT, CLASS 1, TYPE A - ORGANIC, UNLESS INDICATED OTHERWISE IN PLANS OR SPECIFICATIONS.



REVISION	DATE	BY
###	###	###
###	###	###
###	###	###
###	###	###

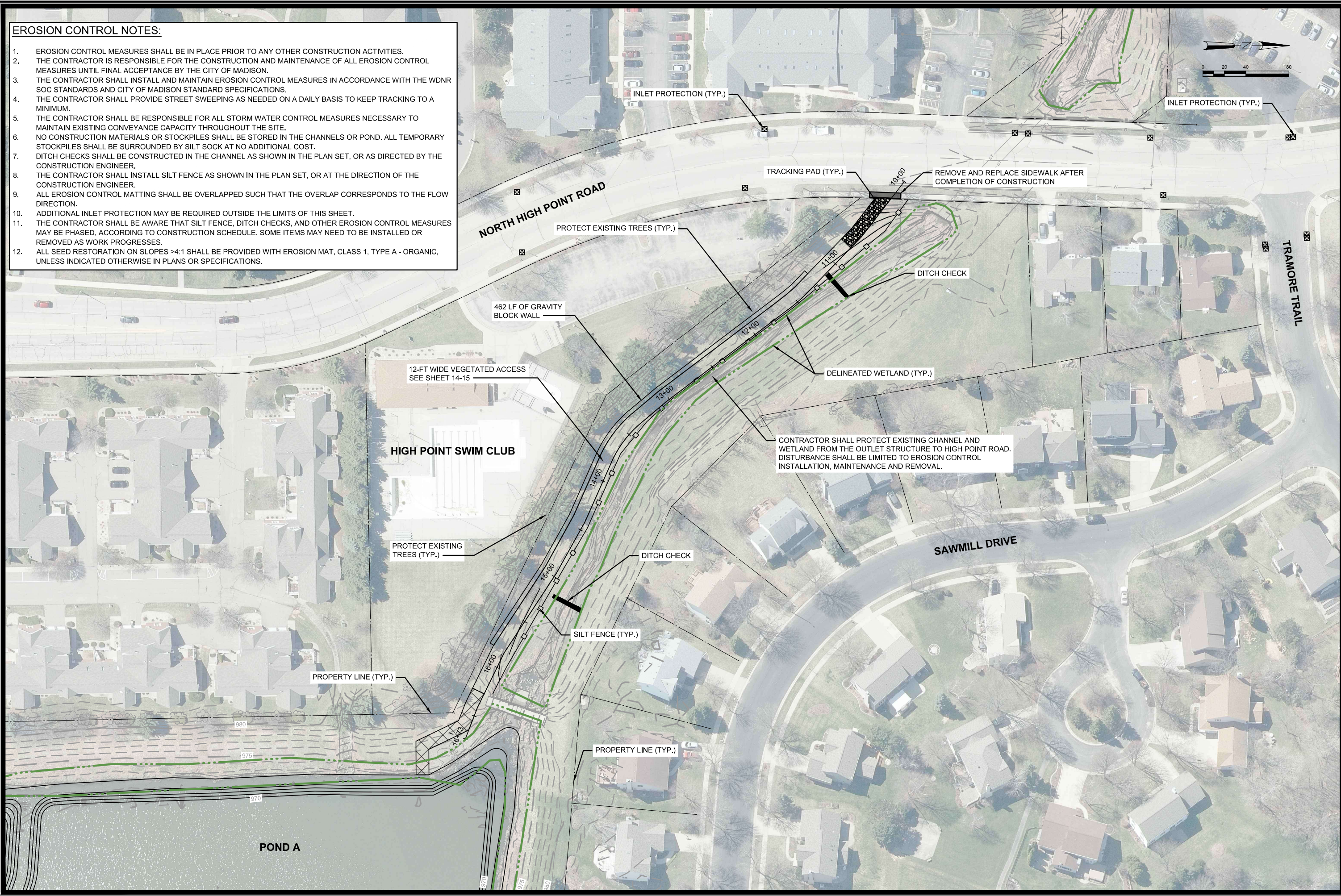
12750
 CITY OF MADISON
 CONTRACT NO: 8876

EROSION CONTROL AND GRADING PLAN - PONDS
 WEXFORD POND DREDGING
 S:\MAD\1000--1099\1020\126\Drawings\CAD\Civil 3d\SheetsPlan\Pond Sheets 7.22.22.dwg

12750
 7

EROSION CONTROL NOTES:

1. EROSION CONTROL MEASURES SHALL BE IN PLACE PRIOR TO ANY OTHER CONSTRUCTION ACTIVITIES.
2. THE CONTRACTOR IS RESPONSIBLE FOR THE CONSTRUCTION AND MAINTENANCE OF ALL EROSION CONTROL MEASURES UNTIL FINAL ACCEPTANCE BY THE CITY OF MADISON.
3. THE CONTRACTOR SHALL INSTALL AND MAINTAIN EROSION CONTROL MEASURES IN ACCORDANCE WITH THE WDNR SOC STANDARDS AND CITY OF MADISON STANDARD SPECIFICATIONS.
4. THE CONTRACTOR SHALL PROVIDE STREET SWEEPING AS NEEDED ON A DAILY BASIS TO KEEP TRACKING TO A MINIMUM.
5. THE CONTRACTOR SHALL BE RESPONSIBLE FOR ALL STORM WATER CONTROL MEASURES NECESSARY TO MAINTAIN EXISTING CONVEYANCE CAPACITY THROUGHOUT THE SITE.
6. NO CONSTRUCTION MATERIALS OR STOCKPILES SHALL BE STORED IN THE CHANNELS OR POND. ALL TEMPORARY STOCKPILES SHALL BE SURROUNDED BY SILT SOCK AT NO ADDITIONAL COST.
7. DITCH CHECKS SHALL BE CONSTRUCTED IN THE CHANNEL AS SHOWN IN THE PLAN SET, OR AS DIRECTED BY THE CONSTRUCTION ENGINEER.
8. THE CONTRACTOR SHALL INSTALL SILT FENCE AS SHOWN IN THE PLAN SET, OR AT THE DIRECTION OF THE CONSTRUCTION ENGINEER.
9. ALL EROSION CONTROL MATTING SHALL BE OVERLAPPED SUCH THAT THE OVERLAP CORRESPONDS TO THE FLOW DIRECTION.
10. ADDITIONAL INLET PROTECTION MAY BE REQUIRED OUTSIDE THE LIMITS OF THIS SHEET.
11. THE CONTRACTOR SHALL BE AWARE THAT SILT FENCE, DITCH CHECKS, AND OTHER EROSION CONTROL MEASURES MAY BE PHASED, ACCORDING TO CONSTRUCTION SCHEDULE. SOME ITEMS MAY NEED TO BE INSTALLED OR REMOVED AS WORK PROGRESSES.
12. ALL SEED RESTORATION ON SLOPES >4:1 SHALL BE PROVIDED WITH EROSION MAT, CLASS 1, TYPE A - ORGANIC, UNLESS INDICATED OTHERWISE IN PLANS OR SPECIFICATIONS.



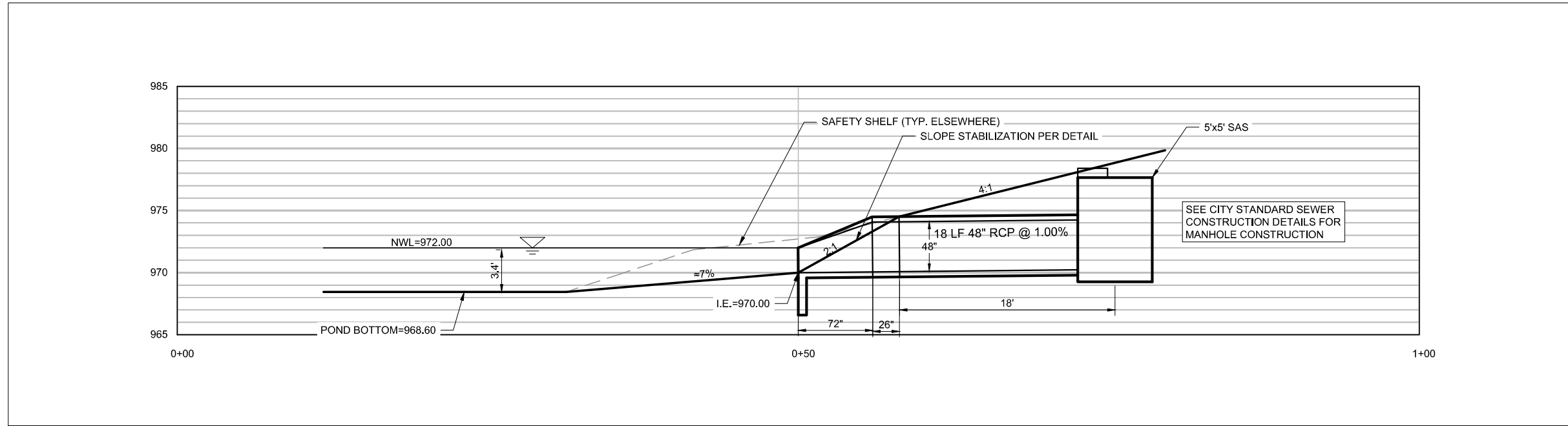
MARK	REVISION	DATE	BY
###	###	###	###
###	###	###	###
###	###	###	###
###	###	###	###

12750
 CITY OF MADISON
 CONTRACT NO: 8876

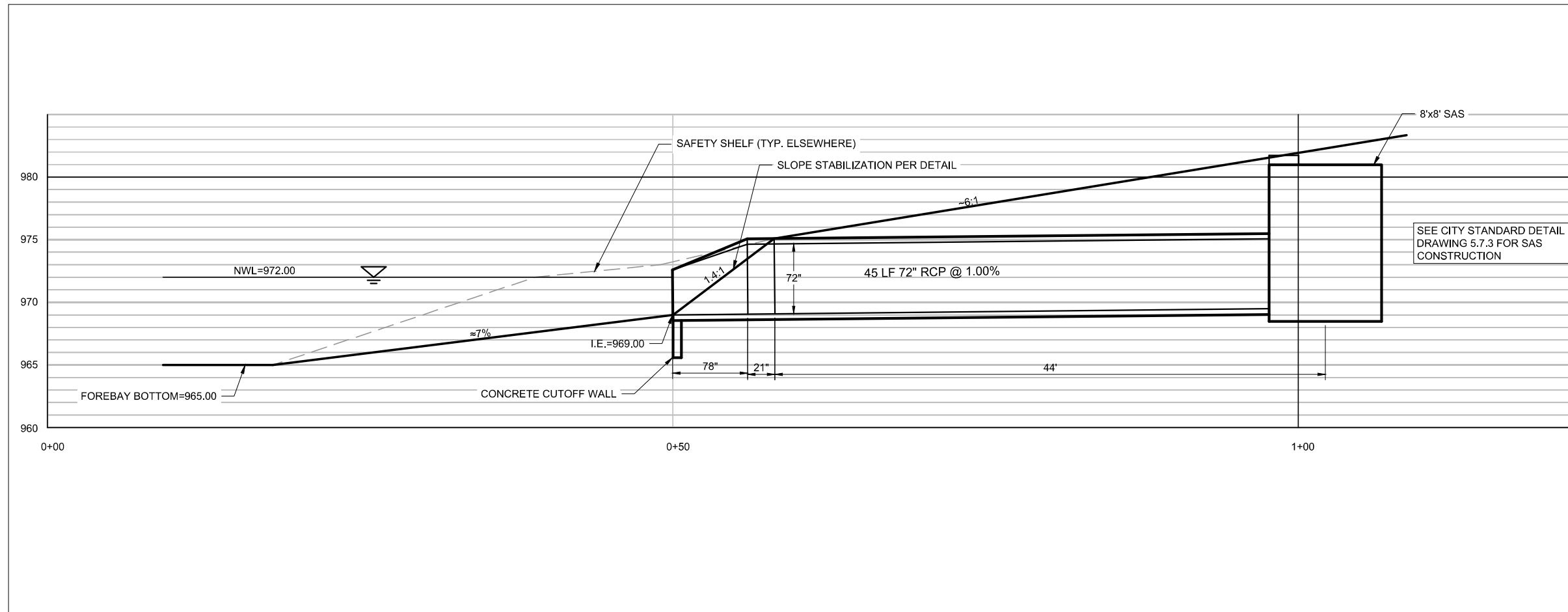
EROSION CONTROL AND GRADING PLAN-VEGETATED ACCESS
 WEXFORD POND DREDGING
 S:\MAD\1000--1099\1020\126\Drawings\CAD\Civil 3d\SheetsPlan\Grading Plan.dwg



48" OUTFALL PIPE PROFILE



72" OUTFALL PIPE PROFILE



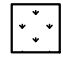


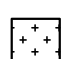

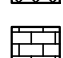

REVISION	DATE	BY
###	###	###
###	###	###
###	###	###
###	###	###

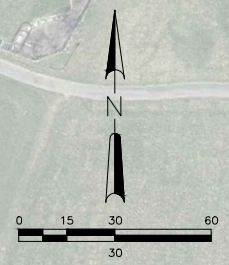
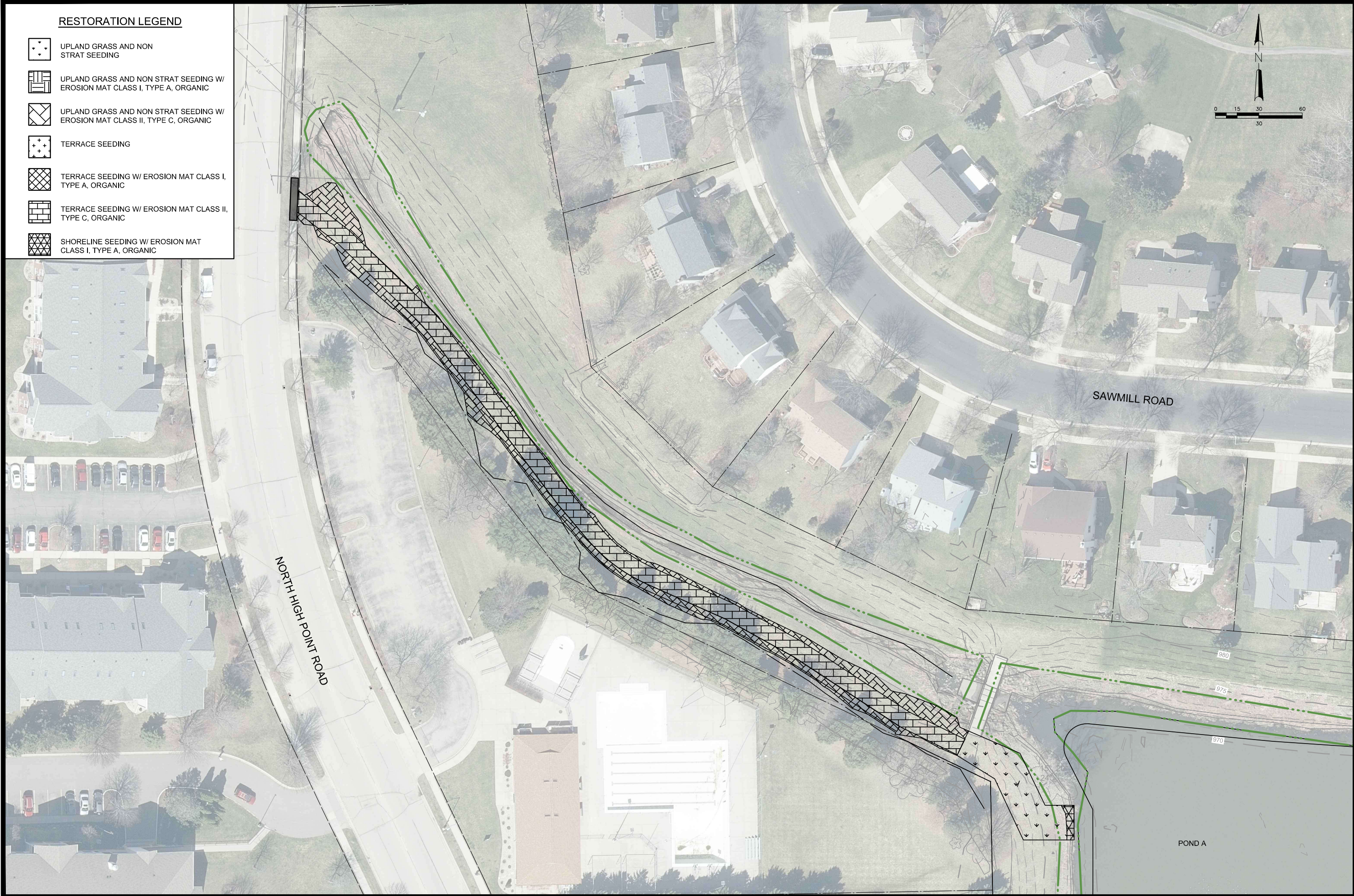
12750
 CITY OF MADISON
 CONTRACT NO: 8876

OUTFALL PIPE PROFILES
 WEXFORD POND DREDGING
 S:\MAD\1000--1099\1020\126\Drawings\CAD\Civil 3d\Sheets\Plan\Pond Plan Sheets.dwg



RESTORATION LEGEND

-  UPLAND GRASS AND NON STRAT SEEDING
-  UPLAND GRASS AND NON STRAT SEEDING W/ EROSION MAT CLASS I, TYPE A, ORGANIC
-  UPLAND GRASS AND NON STRAT SEEDING W/ EROSION MAT CLASS II, TYPE C, ORGANIC
-  TERRACE SEEDING
-  TERRACE SEEDING W/ EROSION MAT CLASS I, TYPE A, ORGANIC
-  TERRACE SEEDING W/ EROSION MAT CLASS II, TYPE C, ORGANIC
-  SHORELINE SEEDING W/ EROSION MAT CLASS I, TYPE A, ORGANIC






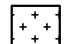

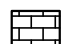

MARK	REVISION	DATE	BY
###	###	###	###
###	###	###	###
###	###	###	###
###	###	###	###

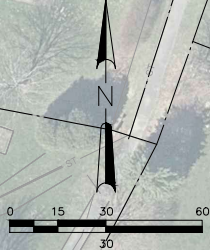
12750
 CITY OF MADISON
 CONTRACT NO: 8876

RESTORATION PLAN - NORTH
 WEXFORD POND DREDGING
 S:\MAD\1000--1099\1020\126\Drawings\CAD\Civil 3d\Sheets\Plan\Restoration Plan.dwg



RESTORATION LEGEND

-  UPLAND GRASS AND NON STRAT SEEDING
-  UPLAND GRASS AND NON STRAT SEEDING W/ EROSION MAT CLASS I, TYPE A, ORGANIC
-  UPLAND GRASS AND NON STRAT SEEDING W/ EROSION MAT CLASS II, TYPE C, ORGANIC
-  TERRACE SEEDING
-  TERRACE SEEDING W/ EROSION MAT CLASS I, TYPE A, ORGANIC
-  TERRACE SEEDING W/ EROSION MAT CLASS II, TYPE C, ORGANIC
-  SHORELINE SEEDING W/ EROSION MAT CLASS I, TYPE A, ORGANIC



MARK	REVISION	DATE	BY
###	###	###	###
###	###	###	###
###	###	###	###
###	###	###	###

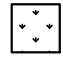


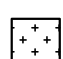

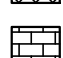

Designed By: TAW Date: 6/2/2023 11:11 AM Scale: 1"=60'
 12750

12750
 CITY OF MADISON
 8876
 CONTRACT NO:


RESTORATION PLAN - MIDDLE
 WEXFORD POND DREDGING
 S:\MAD\1000--1099\1020\126\Drawings\CAD\Civil 3d\Sheets\Plan\Restoration Plan.dwg



RESTORATION LEGEND

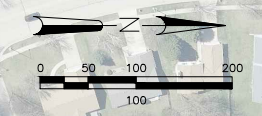
-  UPLAND GRASS AND NON STRAT SEEDING
-  UPLAND GRASS AND NON STRAT SEEDING W/ EROSION MAT CLASS I, TYPE A, ORGANIC
-  UPLAND GRASS AND NON STRAT SEEDING W/ EROSION MAT CLASS II, TYPE C, ORGANIC
-  TERRACE SEEDING
-  TERRACE SEEDING W/ EROSION MAT CLASS I, TYPE A, ORGANIC
-  TERRACE SEEDING W/ EROSION MAT CLASS II, TYPE C, ORGANIC
-  SHORELINE SEEDING W/ EROSION MAT CLASS I, TYPE A, ORGANIC



	12750 12	RESTORATION PLAN - SOUTH WEXFORD POND DREDGING	12750 CITY OF MADISON CONTRACT NO: 8876	S:\MAD\1000--1099\1020\126\Drawings\CAD\Civil 3d\Sheets\Plan\Restoration Plan.dwg MARK: ### REVISION: ### DATE: ### BY: ### Scale: 1"=60' Designed By: TAV Date: 6/2/2023 11:11 AM 12750
---	--------------------	---	---	---

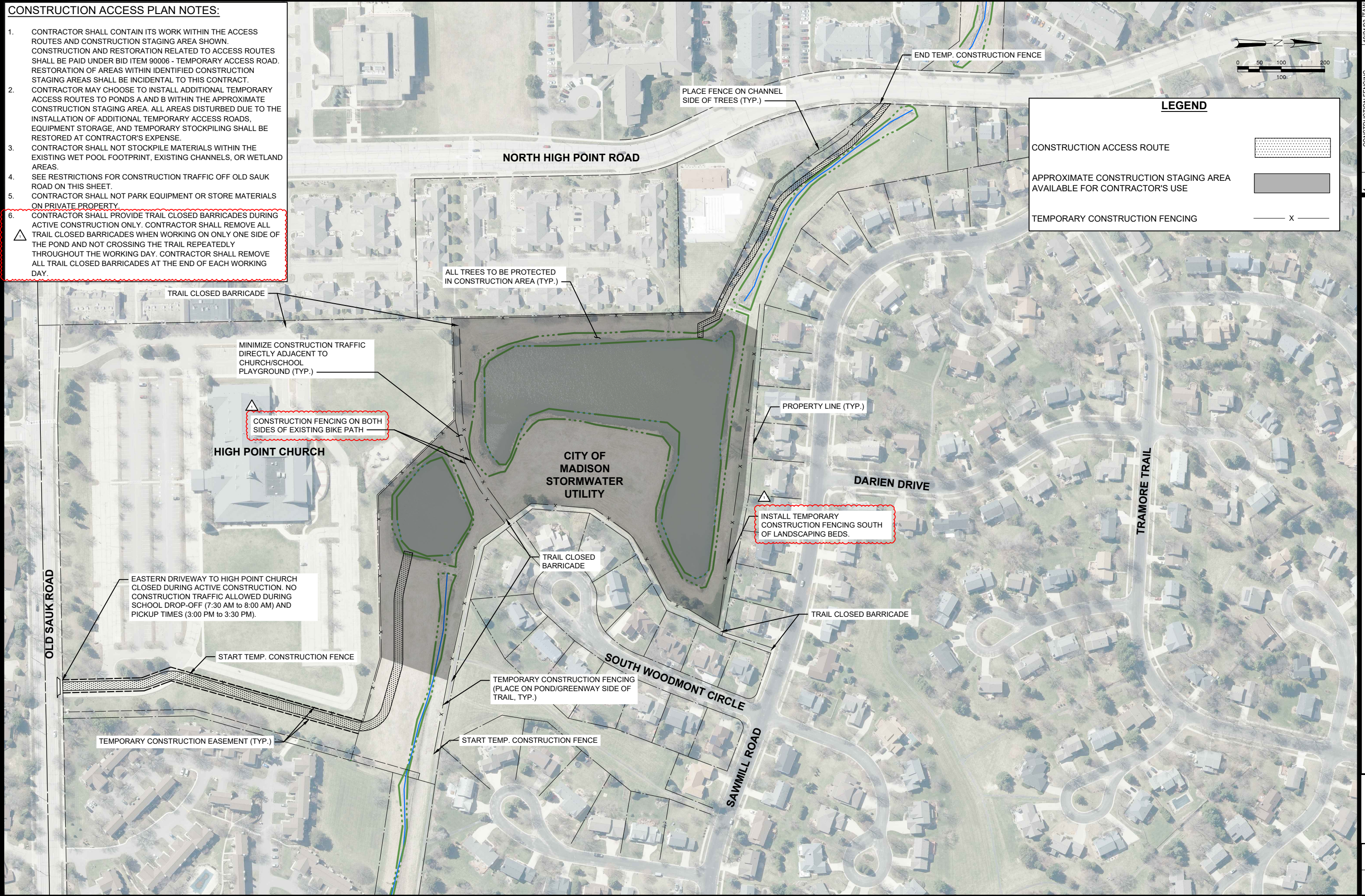
CONSTRUCTION ACCESS PLAN NOTES:

1. CONTRACTOR SHALL CONTAIN ITS WORK WITHIN THE ACCESS ROUTES AND CONSTRUCTION STAGING AREA SHOWN. CONSTRUCTION AND RESTORATION RELATED TO ACCESS ROUTES SHALL BE PAID UNDER BID ITEM 90006 - TEMPORARY ACCESS ROAD. RESTORATION OF AREAS WITHIN IDENTIFIED CONSTRUCTION STAGING AREAS SHALL BE INCIDENTAL TO THIS CONTRACT.
2. CONTRACTOR MAY CHOOSE TO INSTALL ADDITIONAL TEMPORARY ACCESS ROUTES TO PONDS A AND B WITHIN THE APPROXIMATE CONSTRUCTION STAGING AREA. ALL AREAS DISTURBED DUE TO THE INSTALLATION OF ADDITIONAL TEMPORARY ACCESS ROADS, EQUIPMENT STORAGE, AND TEMPORARY STOCKPILING SHALL BE RESTORED AT CONTRACTOR'S EXPENSE.
3. CONTRACTOR SHALL NOT STOCKPILE MATERIALS WITHIN THE EXISTING WET POOL FOOTPRINT, EXISTING CHANNELS, OR WETLAND AREAS.
4. SEE RESTRICTIONS FOR CONSTRUCTION TRAFFIC OFF OLD SAUK ROAD ON THIS SHEET.
5. CONTRACTOR SHALL NOT PARK EQUIPMENT OR STORE MATERIALS ON PRIVATE PROPERTY.
6. CONTRACTOR SHALL PROVIDE TRAIL CLOSED BARRICADES DURING ACTIVE CONSTRUCTION ONLY. CONTRACTOR SHALL REMOVE ALL TRAIL CLOSED BARRICADES WHEN WORKING ON ONLY ONE SIDE OF THE POND AND NOT CROSSING THE TRAIL REPEATEDLY THROUGHOUT THE WORKING DAY. CONTRACTOR SHALL REMOVE ALL TRAIL CLOSED BARRICADES AT THE END OF EACH WORKING DAY.



LEGEND

- CONSTRUCTION ACCESS ROUTE: [Dotted pattern]
- APPROXIMATE CONSTRUCTION STAGING AREA AVAILABLE FOR CONTRACTOR'S USE: [Solid grey fill]
- TEMPORARY CONSTRUCTION FENCING: [Line with 'x' markers]



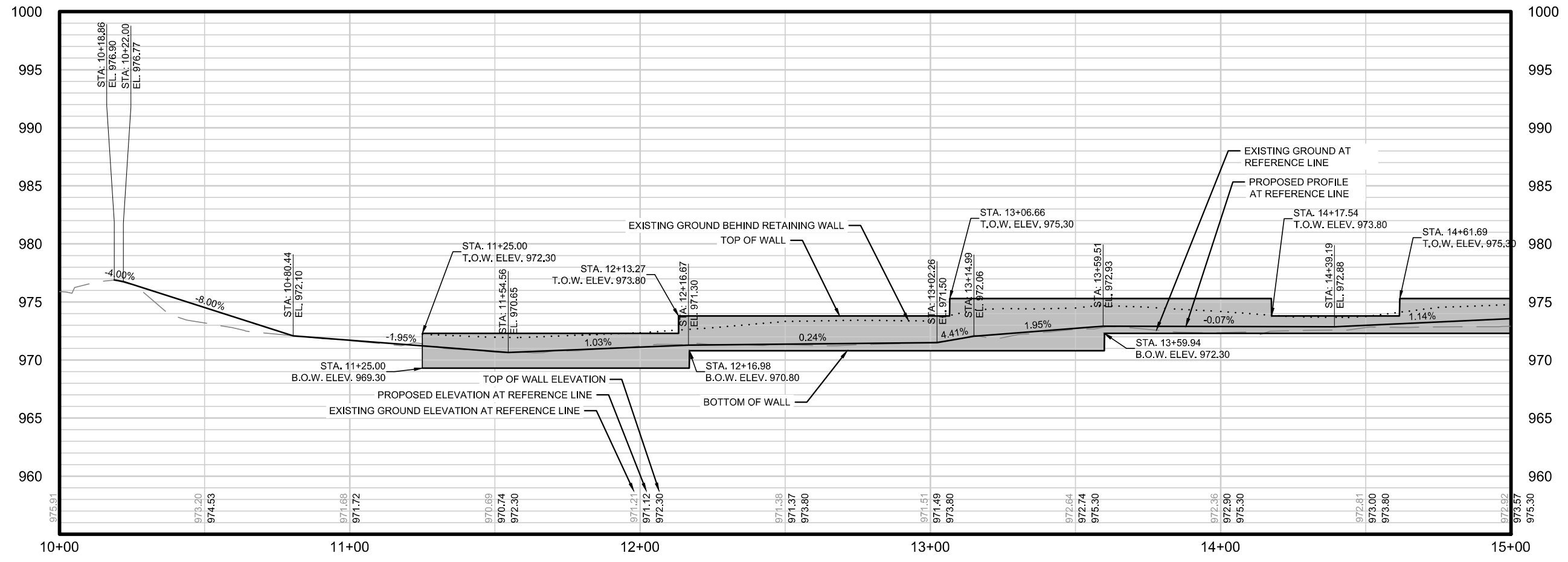
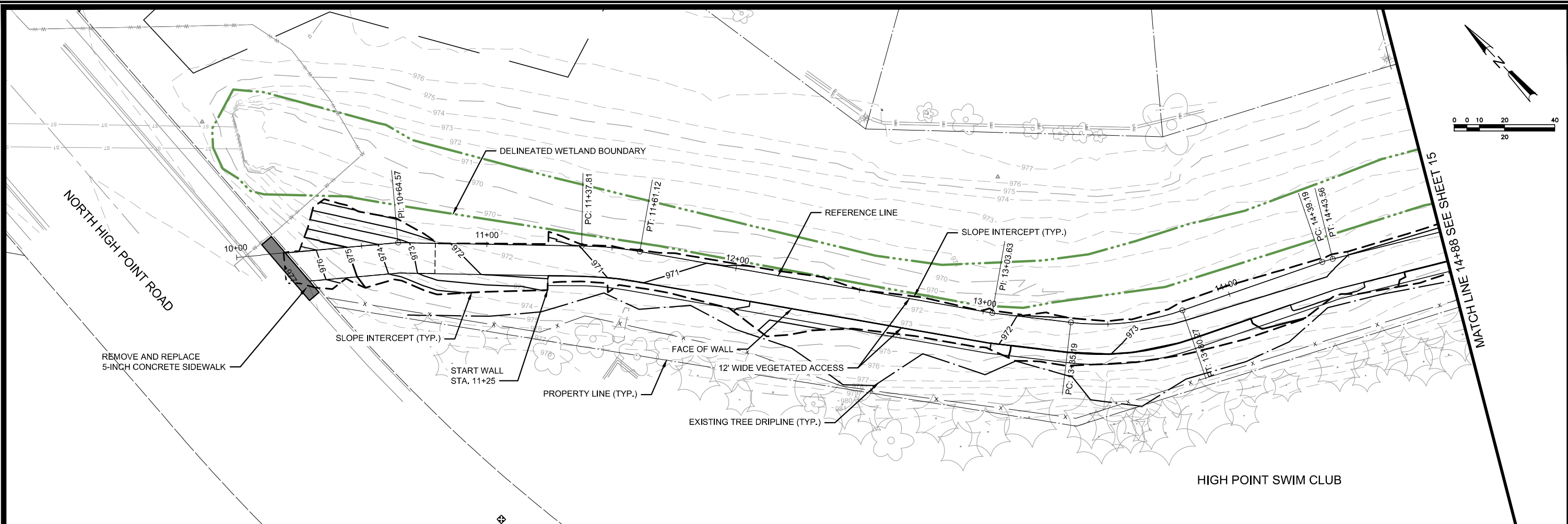
10/24/23	TAV	13
CONSTRUCTION FENCING	###	###
REVISION	###	###
DATE	###	###
BY	###	###
MARK	###	###
Designed By: TAV	Date: 10/24/2023 8:38 AM	Scale: 1"=200'
12750		

12750
CITY OF MADISON
8876

CONSTRUCTION ACCESS PLAN
WEXFORD POND DREDGING
S:\MAD\1000-1099\1020\126\Drawings\CAD\Civil 3d\Sheets\Plan\Construction Access Exhibit.dwg



12750
13



DESIGNED BY	JAW	DATE	6/2/2023 11:12 AM	SCALE	1"=40'
MARK	###	REVISION	###	BY	###
12750	###	###	###	###	14

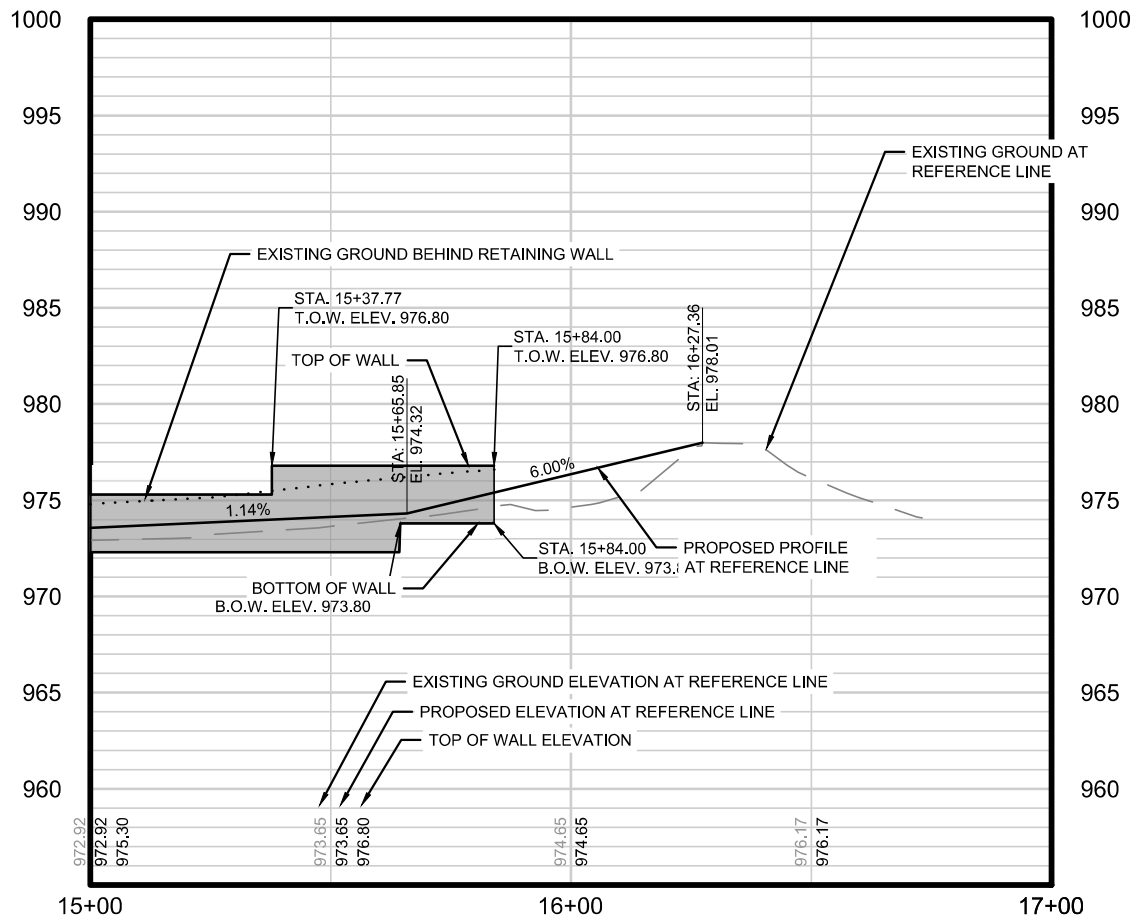
12750
 CITY OF MADISON
 CONTRACT NO: 8876

VEGETATED ACCESS PLAN AND PROFILE
 WEXFORD POND DREDGING
 S:\MAD1000--1099\1020\126\Drawings\CAD\Civil 3d\SheetsPlan\NHP Access.dwg



12750
 14

MATCH LINE 14+88 SEE SHEET 14



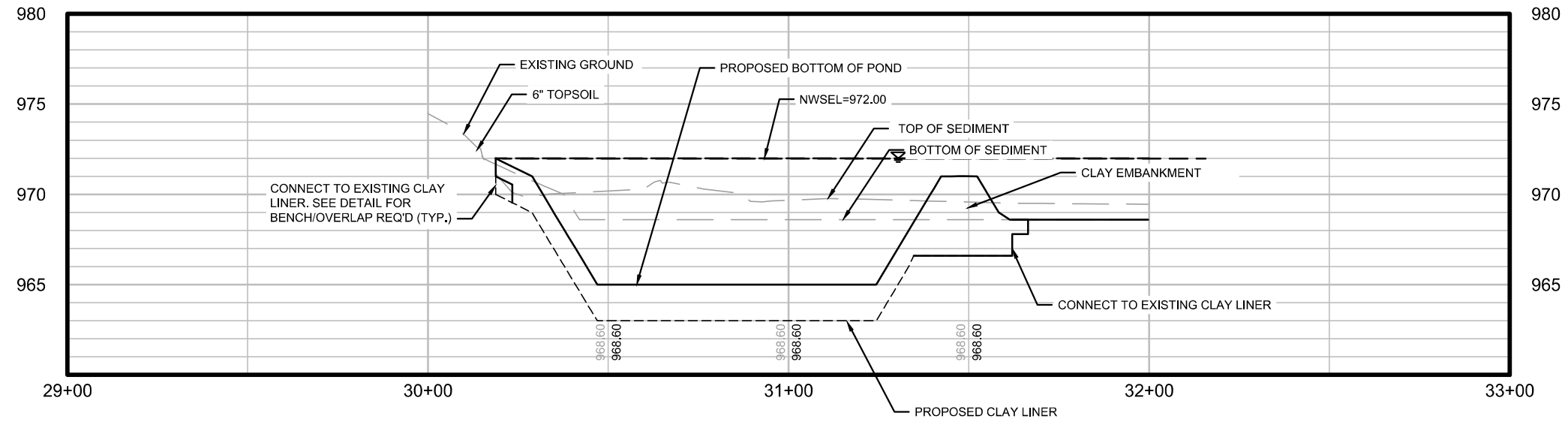
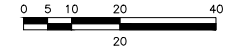
REVISION	DATE	BY
###	###	###
###	###	###
###	###	###
###	###	###

12750
 CITY OF MADISON
 CONTRACT NO: 8876

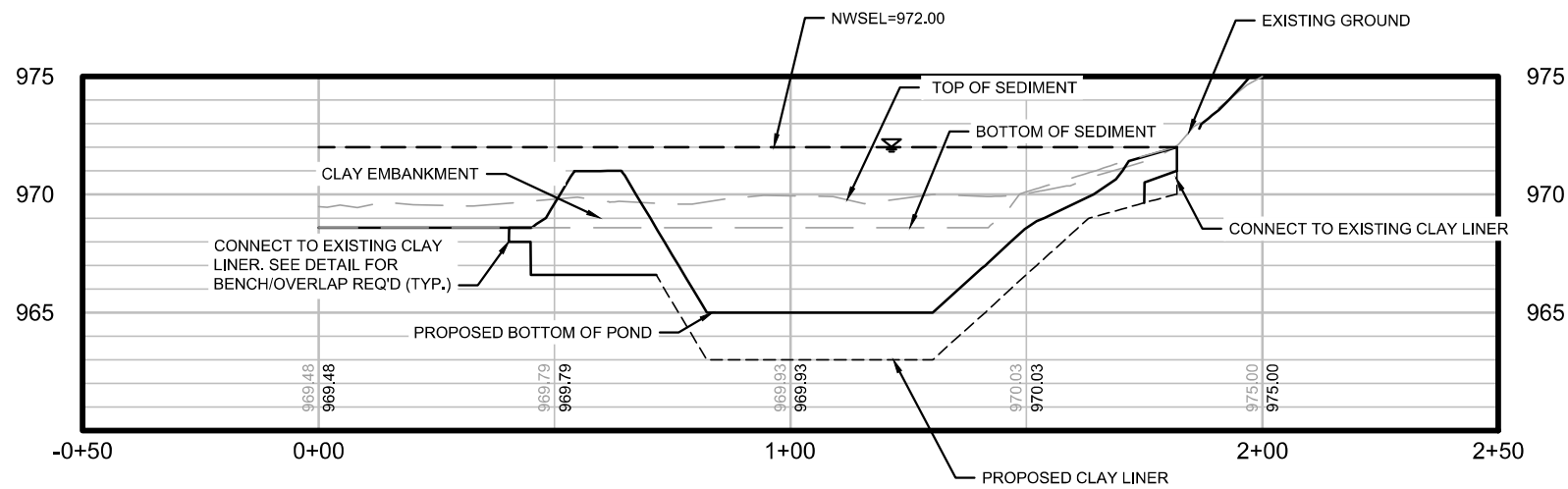
VEGETATED ACCESS PLAN AND PROFILE
 WEXFORD POND DREDGING
 S:\MAD\1000--1099\1020\126\Drawings\CAD\Civil 3d\SheetsPlan\NHP Access.dwg



POND A - SECTION C-C



POND A - SECTION D-D

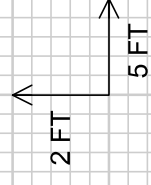
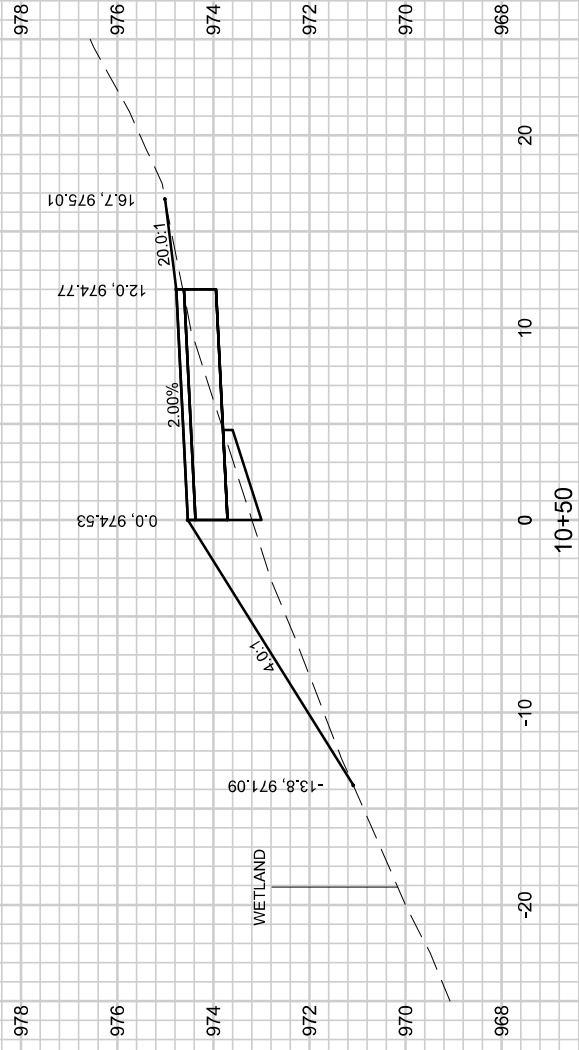
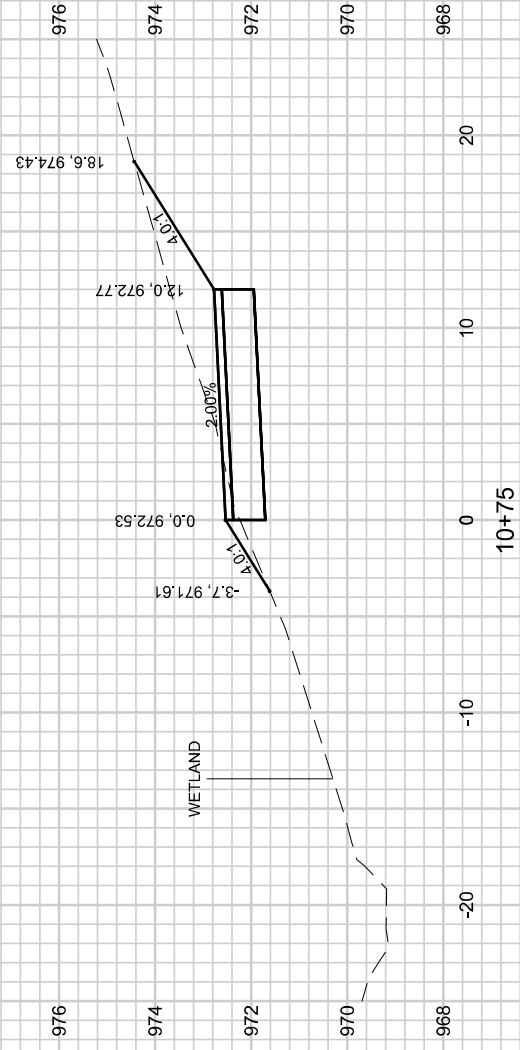
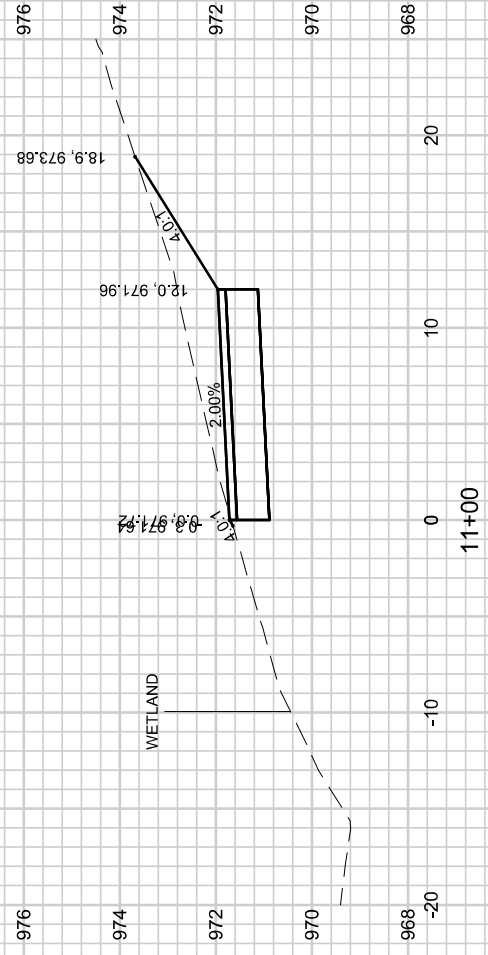


MARK	REVISION	DATE	BY
###	###	###	###
###	###	###	###
###	###	###	###
###	###	###	###

12750
 CITY OF MADISON
 CONTRACT NO: 8876

POND CROSS SECTIONS
 WEXFORD POND DREDGING
 S:\MAD\1000--1099\1020\126\Drawings\CAD\Civil 3d\Sheets\Plan\Pond Sheets 7.22.22.dwg





12750

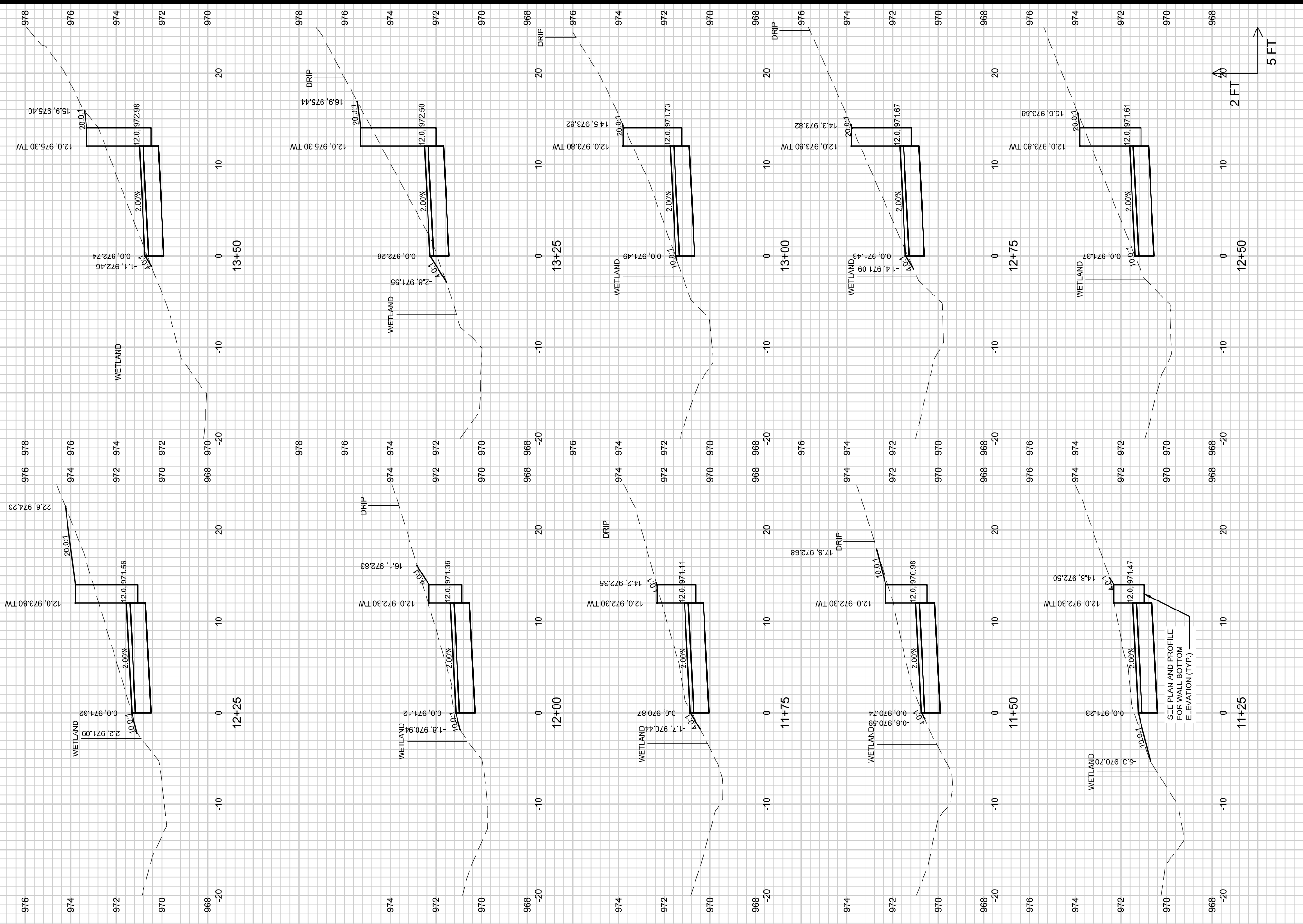
18

VEGETATED ACCESS CROSS SECTIONS
WEXFORD POND DREDGING

S:\MAD\1000-1099\1020\126\Drawings\CAD\Civil 3d\Sheets\Other\North High Point Path XS.dwg

12750
CITY OF MADISON
CONTRACT NO: 8876

MARK	REVISION	DATE	BY
###	###	###	###
###	###	###	###
###	###	###	###
###	###	###	###

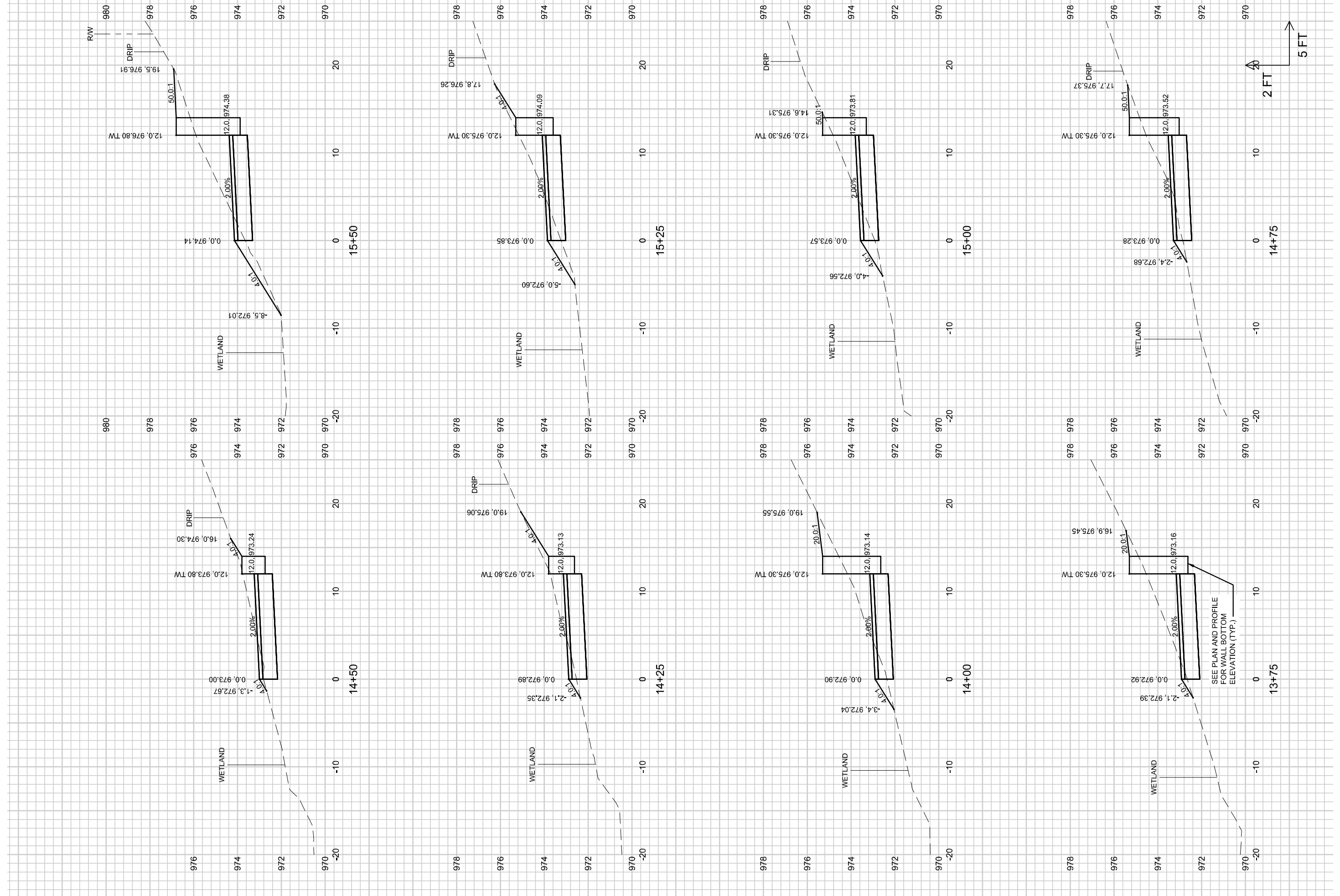


VEGETATED ACCESS CROSS SECTIONS
WEXFORD POND DREDGING

12750
 CITY OF MADISON
 S:\MAD\1000-1099\1020\126\Drawings\CAD\Civil 3d\Sheets\Other\North High Point Path XS.dwg
 CONTRACT NO.: 8876

MARK	REVISION	DATE	BY
###	###	###	###
###	###	###	###
###	###	###	###
###	###	###	###

Designed By: TAW
 Date: 6/2/2023 11:15 AM
 Scale: 1"=10'
 12750



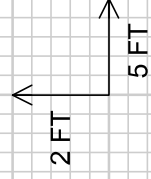
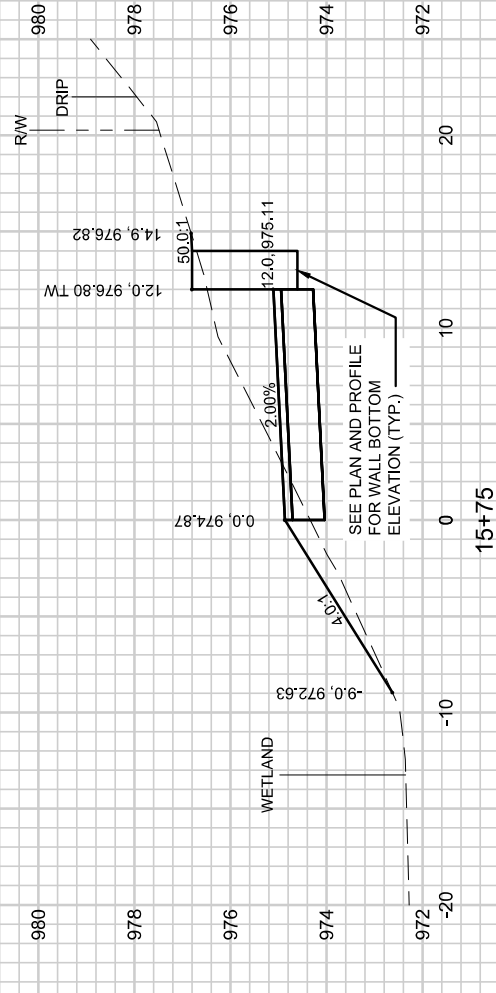
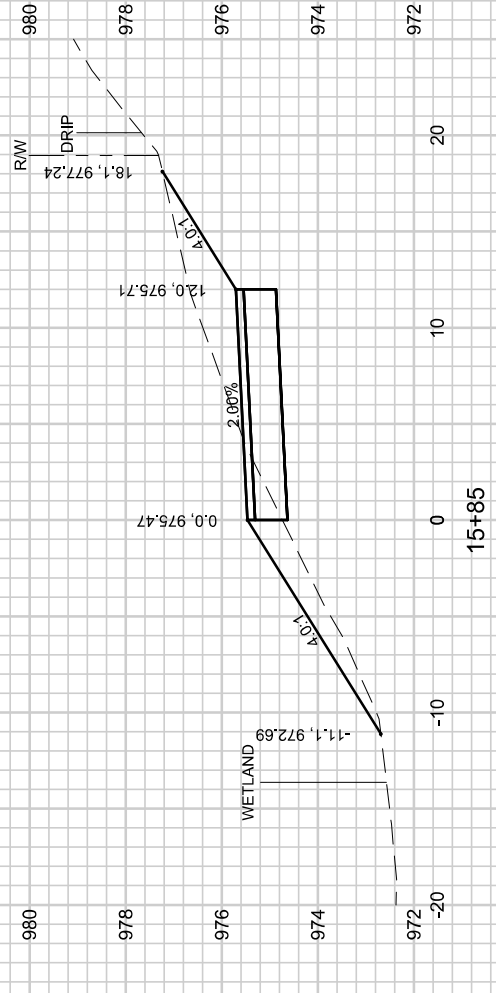
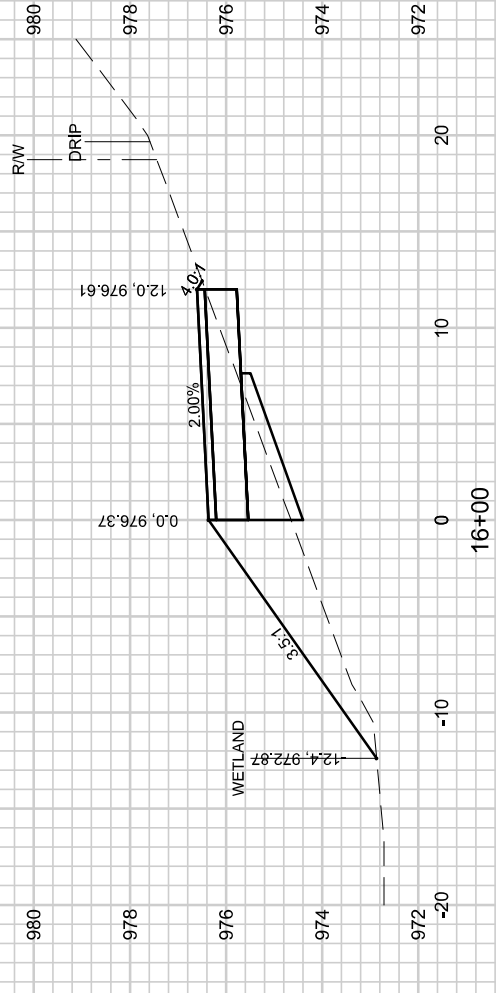
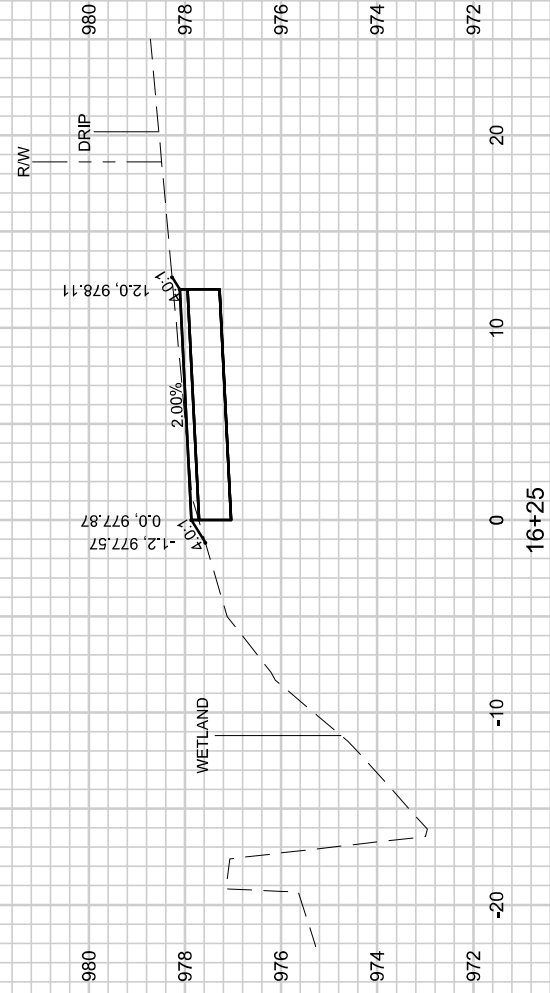
VEGETATED ACCESS CROSS SECTIONS
WEXFORD POND DREDGING

S:\MAD\1000-1099\1020\126\Drawings\CAD\Civil 3d\Sheets\Other\North High Point Path XS.dwg

12750
CITY OF MADISON
CONTRACT NO.: 8876

MARK	REVISION	DATE	BY
###	###	###	###
###	###	###	###
###	###	###	###
###	###	###	###

Designed By: TAW Date: 6/2/2023 11:15 AM Scale: 1"=10'
12750



12750

21

VEGETATED ACCESS CROSS SECTIONS
WEXFORD POND DREDGING

S:\MAD\1000-1099\1020\126\Drawings\CAD\Civil 3d\Sheets\Other\North High Point Path X.s.dwg

12750
CITY OF MADISON
CONTRACT NO: 8876

MARK	REVISION	DATE	BY
###	###	###	###
###	###	###	###
###	###	###	###
###	###	###	###

Designed By: TAW Date: 6/2/2023 11:15 AM Scale: 1"=10'
12750